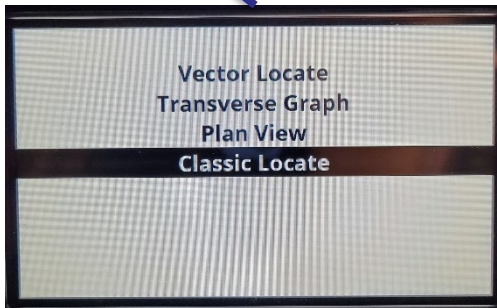
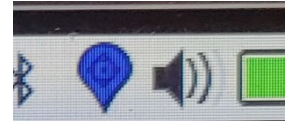
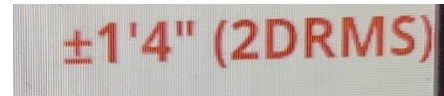


Item	Setting
Radio Band	USA
New Survey Prompt	<input checked="" type="checkbox"/>
Locate Screen Select	<input checked="" type="checkbox"/>
NMEA0183 GNSS Bluetooth	<input checked="" type="checkbox"/>
Open Bluetooth Guidance	<input type="checkbox"/>



- Ability to configure locator to start at new survey prompt screen at power on, requires MyLocator3 v1.16 or later configuration change
- Behaviour of long 'mode' key from the Locate screen is now configurable, allowing faster access to multiple locate perspectives by providing a new selection screen, requires MyLocator3 v1.16 or later configuration change

- Update display of horizontal positional accuracy to show “±” rather than “⇔” before the 2DRMS value
- Display a blue GPS icon on status bar when GPS has SBAS (DGPS) fix
- Ability to configure locator “Imperial / Metric” menu with “Inches” only depth display option in addition to the existing “Feet” and “Meter”, requires MyLocator3 v1.17 or later configuration change



Imp/Metric	<input checked="" type="checkbox"/>	Inches
Metres	<input checked="" type="checkbox"/>	
Feet	<input checked="" type="checkbox"/>	
Inches	<input checked="" type="checkbox"/>	
Speaker	<input type="checkbox"/>	

- Ability to configure a locator menu option to select “Cloud Data” as “Enabled” (mark newly logged data to show it can be sent to the Cloud over cellular or via MyLocator3 “Upload to Cloud”), or “Disabled” (mark newly logged data to show it should not be sent to the Cloud over cellular nor via MyLocator3 “Upload to Cloud” nor via VMMAP iOS/Android application BT log when BT format configured as default), requires MyLocator3 v1.17 or later configuration change

- Ability to configure a locator menu option to select “Coordinate Format” for display of latitude and longitude in the existing Degrees Minutes Seconds (D°M’S.S”), Degrees Decimal Minutes (D°M.M’) or Decimal Degrees (D.D°), requires MyLocator3 v1.17 or later configuration change

Cloud Data	<input checked="" type="checkbox"/>	
Disabled	<input checked="" type="checkbox"/>	
Enabled	<input checked="" type="checkbox"/>	

Coordinate Format	<input checked="" type="checkbox"/>	
Degrees,Minutes,Seconds	<input checked="" type="checkbox"/>	
Degrees,Minutes	<input checked="" type="checkbox"/>	
Decimal Degrees	<input checked="" type="checkbox"/>	

- Ability to configure locator to provide a warning when the horizontal positional accuracy 2DRMS exceeds a configured threshold, info screens display the horizontal accuracy in red and display a GPS warning triangle when the threshold is exceeded
- Optionally logging is prevented when the warning is displayed with a red log soft key shown, requires MyLocator3 v1.17 or later configuration change

GPS Horizontal Accuracy Warning

threshold (2DRMS): 3

prevent logging:

Inches

cm

Inches

