

RTK-Pro Feature Log

Feature Logging is useful for collecting additional information pertaining to a underground utility or it's surrounding above ground point of interest.

Necessary programs:

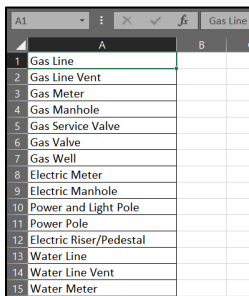
- Microsoft Excel® (from version 2008 with .xlsx format)
- MyLocator3 Desktop App (Available free of charge on www.vivax-metrotech.com/support/downloads)

Setup and Import of Data Dictionary

To begin one must setup a data dictionary in order to easily tag the data collected during the locating survey. Below described the process of how to create and load the data dictionary into the RTK-Pro using MyLocator3.

1. Setup the data dictionary with assigned definitions and code
 - a. The definition is human readable when the list is presented.
 - b. The code is useful when filtering data when post processing.
2. In this example we will use Microsoft® Excel® to set up the data dictionary
3. Start with a new document and single sheet.
4. Two columns are required one contain the "Definition" and the other a "Code" associated with that definition.
5. The first column "A" will contain the feature definition as seen below. The text entered here will be displayed on the RTK-Pro when the feature log list is presented to the user.

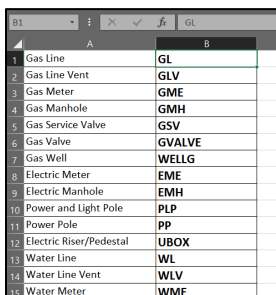
Tip: A maximum of 48 characters can be entered.



	A	B	C
1	Gas Line		
2	Gas Line Vent		
3	Gas Meter		
4	Gas Manhole		
5	Gas Service Valve		
6	Gas Valve		
7	Gas Well		
8	Electric Meter		
9	Electric Manhole		
10	Power and Light Pole		
11	Power Pole		
12	Electric Riser/Pedestal		
13	Water Line		
14	Water Line Vent		
15	Water Meter		

6. In the second column "B" enter a code associated with the definition. Using codes will make sorting or parsing data easier after the data has been collected. The below contain a maximum of seven characters.

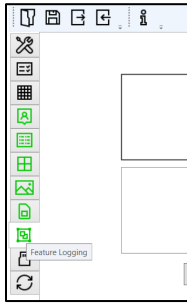
Tip: A maximum of 9 characters can be entered.



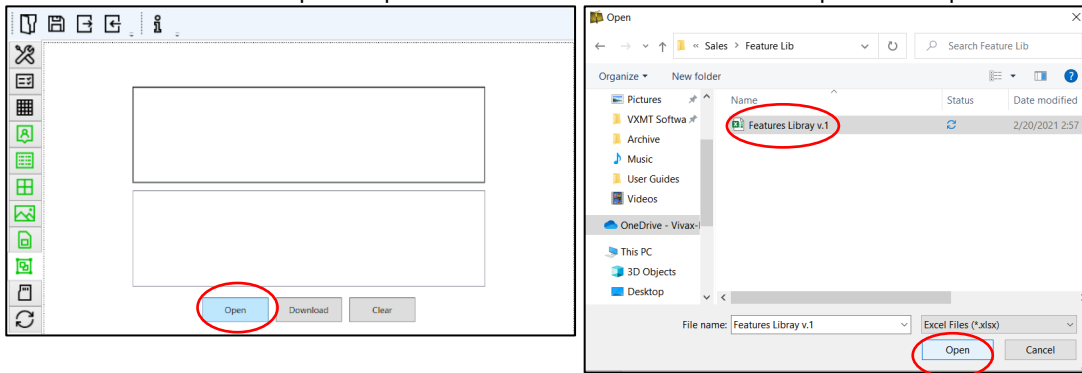
	A	B	C
1	Gas Line	GL	
2	Gas Line Vent	GLV	
3	Gas Meter	GME	
4	Gas Manhole	GMH	
5	Gas Service Valve	GSV	
6	Gas Valve	GVALVE	
7	Gas Well	WELLG	
8	Electric Meter	EME	
9	Electric Manhole	EMH	
10	Power and Light Pole	PLP	
11	Power Pole	PP	
12	Electric Riser/Pedestal	UBOX	
13	Water Line	WL	
14	Water Line Vent	WLV	
15	Water Meter	WME	

7. Continue to add the necessary features. A maximum of 200 objects can be entered.
8. Save the file as Microsoft® Excel® Workbook (.xlsx) to your local storage drive.
9. Open **MyLocator3** and connect the RTK-Pro using the USB cable.

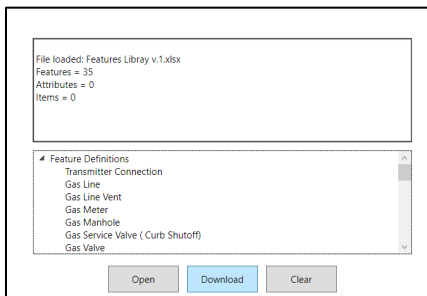
10. Click on the tab on the left labeled “Feature Logging”



11. Once in the tab select the option “Open” to select the .xlsx file created in the previous steps.



12. Once the file has been selected a review on the containing features will be displayed, if you press the small triangle next to “Feature Definitions”. Now you may select “Download” to download the data dictionary into the RTK-Pro.



13. Power off the unit so the changes take effect. At the next power up the data dictionary will be available in the receiver.

Logging Features

To collect a feature start by entering the main menu and scroll to the “Feature Log” menu option.

There are two ways in which feature logs operate.

- a) The first method is labeled as “Log Feature” in the main menu.
- b) The second method is labeled “Auto Log Feature” that is also found in the main menu.

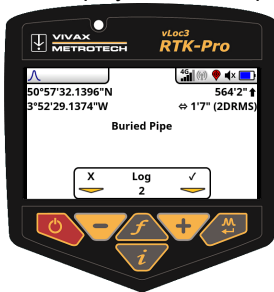
We will first cover the **Log Feature**. This is useful for collecting points of interest that do not carry a locating signal tone. For example, if a handhole cover is present but not directly part of the underground utility.

Logging Feature:

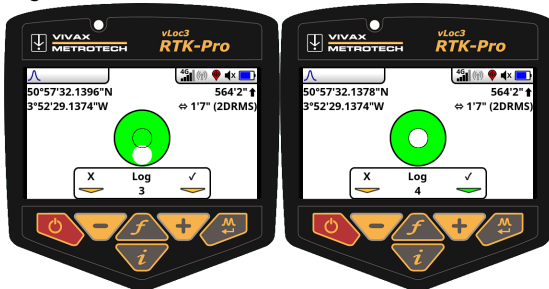
1. Place the RTK-Pro on the point of interest.
2. Long press on the “i” key to enter the main menu and scroll to **Log Feature**



3. Once entered, the info-screen appears. Press the “f” pushbutton to open the data dictionary list with all the available definitions.
4. Use the “+” and “-“ pushbutton to scroll up and down the list. Once the required feature is reached press the “Return” pushbutton.
5. The display will now display a quick review of the selected feature along with the logging screen.



6. Press the “+” pushbutton to log now the receiver will display the spirit level in order to tilt the receiver to align the GNSS antenna.



Auto Log Feature

To enable the Auto Log Function, navigate to the main menu and find “**Auto Log Feature**”. Two options are presented to the user **Enabled** or **Disabled**. Enabling this option will tag all the logs with a specified feature. Enabling the Auto Log Feature options helps with tagging data pertaining to the underground utility that will need to remain the same for more than one log. Leave the user menu by pressing the “i” pushbutton.

To collect data with the Auto Log Feature enabled perform the following:

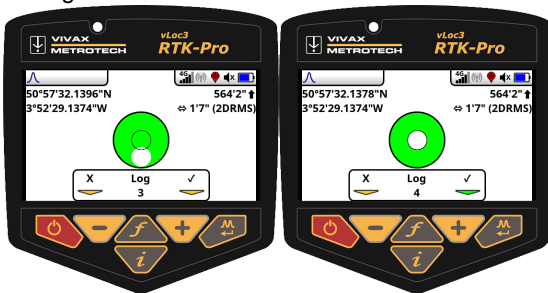
1. Locate the underground utility.
2. Enter the information screen by pressing the “i” pushbutton.

3. Press the “f” pushbutton to display the list of available features in the data dictionary.



4. Use the “+” and “-” pushbutton to scroll up and down the list. Once the required feature is reached press the “Return” pushbutton.

5. Once the selected feature is selected the screen will change to the tilt screen align the spirit level to store the log.

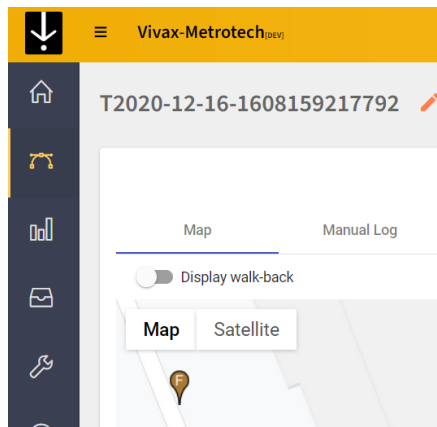


5. The screen will now revert to the locate screen now you can continue to locate the utility. Continue to collect data as needed. If at any point the feature needs to be changed press the “f” pushbutton to open the data dictionary.

Tip: From the moment when the automatic object recording is activated, every point that is recorded is provided with a feature. If you no longer want this, switch off the “Auto Log Features” recording in the main menu.

Feature Logs in VMMap Cloud

Once feature logs are synced with the utility survey in the cloud a unique pin is assigned. In the example below you can see the location pin is brown also the pin contains a “F” label.





When exporting the data to a .csv or .shp file the feature log data is also carried over. Below you can see the column labeled “**Feature Code**” and “**Feature Description**”.

AS	AT
feature code	feature description
GL	Gas Line
GL	Gas Line
GL	Gas Line
GL	Gas Line
GL	Gas Line
GL	Gas Line
GL	Gas Line
GL	Gas Line
GL	Gas Line
GL	Gas Line
GL	Gas Line
GL	Gas Line
GL	Gas Line

All third-party trademarks belong to their respective owners.